



**Ryan Schilreff**  
General Manager



# CO-OP NEWS

OCTOBER 2017



GENERAL MANAGER'S REPORT

3978 US Hwy 26/85  
Torrington, Wyoming 82240  
PO Box 359, Lingle, 82223  
How to reach us  
307-837-2225 • 800-628-5266  
Fax: 307-837-2115

E-mail: [wyrulec@wyrulec.com](mailto:wyrulec@wyrulec.com)  
Website: [www.wyrulec.com](http://www.wyrulec.com)

May through September  
Office hrs: 6:30–5:00, Mon.-Fri.

October through April  
Office hrs: 7:30–4:00, Mon.-Fri.

Winter  
hours in  
effect

### Board of Directors

Dewey Hageman  
President

Clay Peterson  
Vice President

Julie Kilty  
Treasurer

Kenda Knudsen  
Secretary

Jack Preston  
Assistant Secretary

General Manager  
Ryan Schilreff

Senior Staff  
Joe Kinnan  
Operations Manager

Tiphanie Fuss  
Office Manager

A Touchstone Energy Cooperative

Your cooperative is a proud member of these fine organizations



## It's National Cooperative Month!

October is National Cooperative Month, Wyrulec Company — and all co-ops across the U.S. — are celebrating the benefits and values that co-operatives bring to their members and communities.

While co-ops operate in many industries and sectors of the economy, seven cooperative principles (at right) set us apart from other businesses.

In the 1930s, rural America needed electricity just as much as anyone else. It was a major challenge that big utilities weren't interested in tackling. So, the men and women of rural America banded together and made it happen. That's why we celebrate in October — we celebrate the power of working together for the common good and bettering the quality of life for our friends and neighbors. We celebrate Wyrulec Company.

### 1: Voluntary & Open Membership

Membership in cooperatives is voluntary and available to all who can reasonably use its services regardless of race, religion, sex, or economic circumstances.

### 2: Democratic Member Control

Cooperatives are democratic organizations with each member having a vote. Control remains in the hands of all consumers. Directors are elected from the membership.

### 3: Member Economic Participation

Members democratically control and equally contribute to the capital of their co-op. Members may allocate surpluses for any of the following purposes: developing the co-op; setting up reserves; benefitting members in proportion to their transactions with the co-op; and supporting other activities approved by the membership.

### 4: Autonomy and Independence

Co-ops are self-sustaining, self-help organizations controlled by their members. If co-ops enter into agreements with others or raise money from outside sources, they do so on terms that maintain democratic control as well as their unique identity. \*Fred (Delores) Reichert\*

### 5: Education, Training & Information

Co-ops provide education and training for their members, elected representatives, managers, and employees to keep them up-to-date on issues so they can effectively govern the cooperative. Communication with the general public is necessary regarding the nature and benefits of the co-op.

### 6: Cooperation among Cooperatives

Co-ops serve their members most effectively & strengthen the cooperative movement by working together through local, national, regional, and international structures.

### 7: Concern for Community

While focusing on member needs, cooperatives work for sustainable development of their communities through policies accepted by their members.

# DID YOU KNOW?



The Website of your Cooperative is more than just a place to pay your bill. Take a look at some of the active features below:

**At Wyrulec.com you can:**

- View Your Monthly Account Statements
- View Your Usage History and Graphs
- Pay Your Bill
- Send a Message to the Wyrulec Office
- Fill Out Forms
- Enroll in Operation Round Up
- Get a Copy of the Newsletter
- Receive Important Information Updates

\*Richard Garner\*

As the weather changes, so can your electric bill. Viewing your usage history can be a great tool on what to expect as the weather cools down and heats up. To view your location's usage history log in, and follow the simple steps below to see various graphs and tools to help you analyze your electricity consumption \*Marie Blocker\*

**STEP 1:** Once Logged In, click on Services, next click on the service you would like to see the usage history for



Select the view button to display the services on each location. Select the view button next to the service to display the consumption and dollars for each month in chart or graph form.

**Account Selection**

34140 : MULTIPLE 2

Account: 34140      Name: Wyrulec Company

Balance: \$0.00

Mailing Address: PO BOX 359, LINGLE WY 82223-0359

Phone: (307) 837-2225      Cell Phone:      Email:

**Balance Information**

Your balance of \$0.00 reflects your recent payment(s) of \$0.00.

Total Balance: \$0.00

Current Balance: \$0.00

Overdue Balance: \$0.00

[Pay Now](#)

**Services**

Show 10 entries

Service Address	Description	Status	View Services
25-62-35-42	BILLBOARD SIGN LIGHTING	ACTIVE	<a href="#">View</a>
25-62-35-41	NEW HEADQUARTERS	ACTIVE	<a href="#">View</a>

**STEP 2:** Click [View](#) to see graphs

**Services**

[View Locations](#)

Show  entries

Service	Meter Number	Billing Status	View Usage
ELECTRIC	20252	Active	<a href="#">View</a>

**Services**

**Viewing Billed Usage: 25-62-35-41 - ELECTRIC Meter 20252**

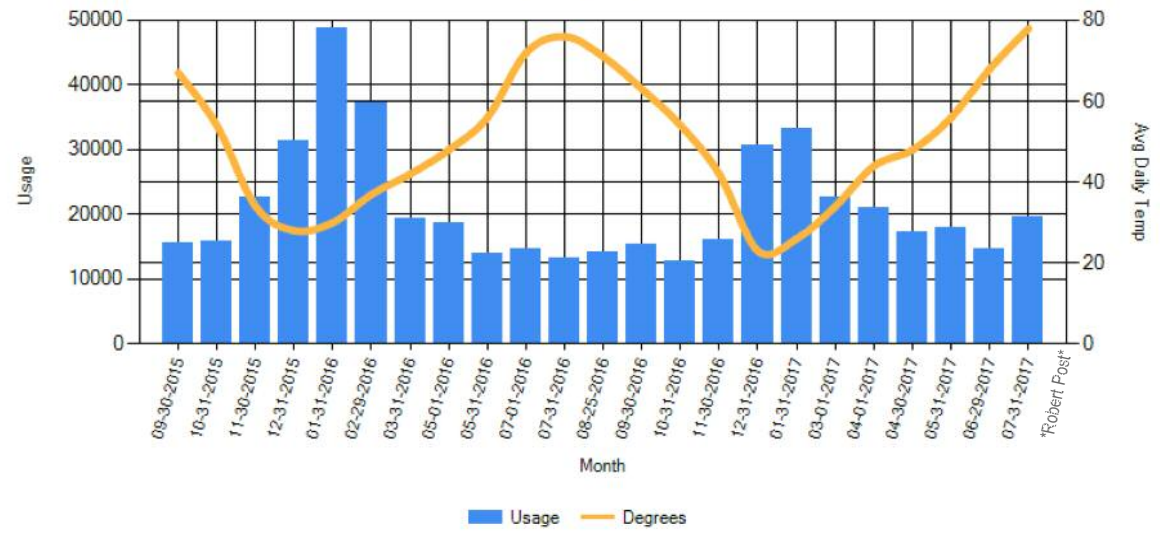
Register Type: Usage By: Start Date: End Date:

KWH

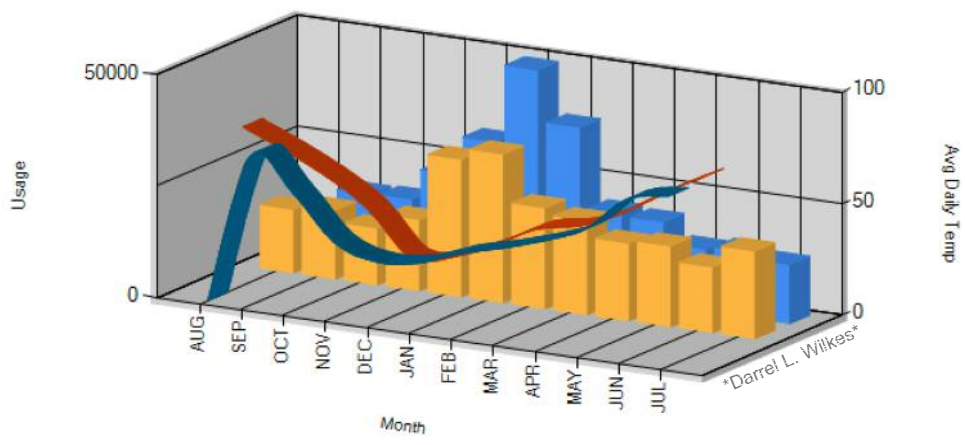
[Select Different Service/Meter](#)

[View grid](#) [Refresh](#)

Usage chart



Two Years Usage in 12 Months





# COMMUNITY CORNER

At your Co-op, we take safety very seriously! These tips can be helpful in ensuring that you have a Spooky, but most of all Safe Halloween!



## WALK SAFELY

- Cross the street at corners, using traffic signals and crosswalks.
- Always walk on sidewalks or paths. If there are no sidewalks, walk facing traffic as far to the left as possible. Children should walk on direct routes with the fewest street crossings.



## TRICK OR TREAT WITH AN ADULT

- Children under the age of 12 should not be alone at night without adult supervision. If kids are mature enough to be without supervision, they should stick to familiar areas that are well lit and trick-or-treat in groups.



## KEEP COSTUMES CREATIVE AND SAFE

- Decorate costumes and bags with reflective tape or stickers and, if possible, choose light colors.
- Have kids carry glow sticks or flashlights to help them see and be seen by drivers.



## DRIVE EXTRA SAFELY ON HALLOWEEN

- Drive slowly, anticipate heavy pedestrian traffic and turn your headlights on earlier in the day to spot children from greater distances.
- Popular trick-or-treating hours are 5:30 p.m. to 9:30 p.m. so be especially alert to kids during those hours.



Come See Us for Tricks and Treats on Halloween!

7:30 a.m. - 4:00 p.m.

There will be a prize for the Best Youth Costume!