



Ryan Schilreff
General Manager



CO-OP NEWS

MARCH 2020



OFFICE MANAGER'S REPORT

3978 US Hwy 26/85
Torrington, Wyoming 82240
PO Box 359, Lingle, 82223
How to reach us
307-837-2225 • 800-628-5266
Fax: 307-837-2115

E-mail: wyrulec@wyrulec.com
Website: www.wyrulec.com

May through September
Office hrs: 6:30–5:00, Mon.-Fri.

October through April
Office hrs: 7:30–4:00, Mon.-Fri.



Board of Directors

Clay Peterson
President

Kenda Knudsen
Vice President

Dewey Hageman
Treasurer

Julie Kilty
Secretary

Mark Knaub
Assistant Secretary

General Manager
Ryan Schilreff

Senior Staff
Joe Kinnan
Operations Manager

Miles Duffy
Assistant Operations Manager

Tiphanie Fuss
Office Manager

A Touchstone Energy[®] Cooperative

Your cooperative is a proud member of these fine organizations



Cybersecurity Update

At Wyrulec Company, the protection and security of our assets and member data is a high priority.

Our staff are continuously finding ways to work with our vendors and partners within the industry on tackling this complicated and very real issue.

In October of 2019, Wyrulec Company was selected as a NRECA Rural Cooperative Cybersecurity Capabilities Program (RC3) scholarship recipient.

This nationwide program focused on developing tools and resources for improving the cybersecurity capabilities of Wyrulec Company. Through collaboration, education, and training, this program provided your Cooperative with the newest tools and information to keep our system safe from cyber threats.

In addition to cyber attackers trying to access business data, there is a constant threat each of us faces on our personal devices and networks within our homes.

One very common misconception is that a smart phone or tablet is not a computer, so it does not need protection. In fact, a smart phone is a computer that has the ability to make telephone calls.

The following are a few simple recommendations on how you can increase your own personal security:

- ★ Use difficult, alpha numeric combinations in your passwords that cannot be found in your name, personal information, a sequence, or the dictionary in any language

Example Password: **Winniethepooh123**
Likely to be hacked within minutes

Try this instead: **WtPIH10011936*-**
Complexity increases security
(WinniethePoohlikesHoney)

- ★ Use multifactor authentication
 - Asks you a security question that only you know the answer to
 - Sends a code or confirmation to another device in order to complete log in
- ★ Secure your Wi-Fi and Internet connection with a complex password
- ★ Use extreme caution on public Wi-Fi or avoid using public Wi-Fi
- ★ Install security software on your devices
- ★ Never click on unknown pop-ups, emails, and links
- ★ Keep your devices updated, and back up your files

Continued next page

Voting matters

Continued from previous page

Your Ballot, Your Voice

In the month of March, you will receive your 2019 Annual Report Booklet and voting ballot. If you are unsure of your plans or know you are unable to attend the Annual Meeting on March 26, 2020, to vote in person, please remember to send in your absentee ballot!

This ballot represents more than just a

stub of paper in your booklet, it represents your voice in the membership. We have had members comment “Why should I send it in, it doesn’t really matter anyway” or “there is only one candidate on the ballot, so my vote doesn’t even matter”. This is untrue. Your vote counts, and in fact, is something Wyrulec Company must obtain in order to meet our quorum

requirements as a Cooperative each year. * Loyd Megli*

No matter which way you choose to vote, please join your fellow members in completing the absentee ballot or in-person voting process at the annual membership meeting.

If you have any questions about how to send in your ballot, please call us at (307) 837-2225.

—Tiphany Fuss, Office Manager



Members enjoying dinner at the 2019 Annual Meeting.

March
26

* Steven Schaefer *

Mark your
calendars

Come to the 85th
Annual Meeting
on Thursday,
March 26th, 6pm

Unruly Trees and Power Lines: We're On It

We love trees. They beautify our landscape, provide shade and are an essential part of nature.

When you see us out trimming trees,

know that we are doing so to keep you safe and prevent service issues.

Too Close for Comfort

Although most trees do not present a problem, some of them grow into or crowd power lines or other utility equipment. When greenery becomes too close for comfort, we have to address it because overgrowth can interfere

with power distribution and create a fire hazard.

Power lines can give off a spark or arc that may land on a nearby branch and ignite. Additionally, the lights in your house may flicker when tree branches brush power lines during high winds. Stormy weather can also cause limbs to break off and land on lines.

In fact, the majority of power outages are caused by tree-related issues. It is

Continued next page

Energy Efficiency

Tip of the Month

Placing hot food in the refrigerator makes the appliance work harder than necessary, using more energy. Allow food to cool down before you place it in the fridge.

* David Johnson *



Julie Kilty, center, Wyrulec Board of Directors, presents a check from Tri-State Generation & Transmission Assn. to Dr. Lesley Travers, President of EWC, and John Hansen, Director of Institutional Development at EWC. Each year Tri-State provides Wyrulec with a \$1,000 donation to use wherever needed in the community.

Unruly Trees & Power Lines: We're On It

Continued from previous page

our job to ensure trees, branches, and limbs are a safe distance from power lines.

Clear power lines make it easier and safer for lineworkers to access lines and fix problems that may occur.

When clearing around lines, we make sure proper pruning techniques are used to preserve tree health as much as possible. Pruning is the first line of defense against unruly trees, although sometimes a tree must be removed. This is a last resort for certain scenarios: when a fast-growing tree is located directly under a power line or for trees that are leaning, in decline, cracked, or split.

In your own yard

When hiring someone to trim trees on your property, know that most tree-care workers are not qualified to work around energized power lines. By law, only OSHA-certified utility line clearance workers are allowed to work on trees or branches within 10 feet of a power line.

Contact us with questions about trees around power lines. For more information about electrical safety, visit SafeElectricity.org.

Plant the Right Tree in the Right Place

Trees beautify our neighborhoods, and when planted in the right spot, can even help lower energy bills. But the wrong tree in the wrong place can be a hazard... especially to power lines.

For more tips on smart tree planting in your community, contact your local electric cooperative or visit www.ArborDay.org.

Robert Leaf

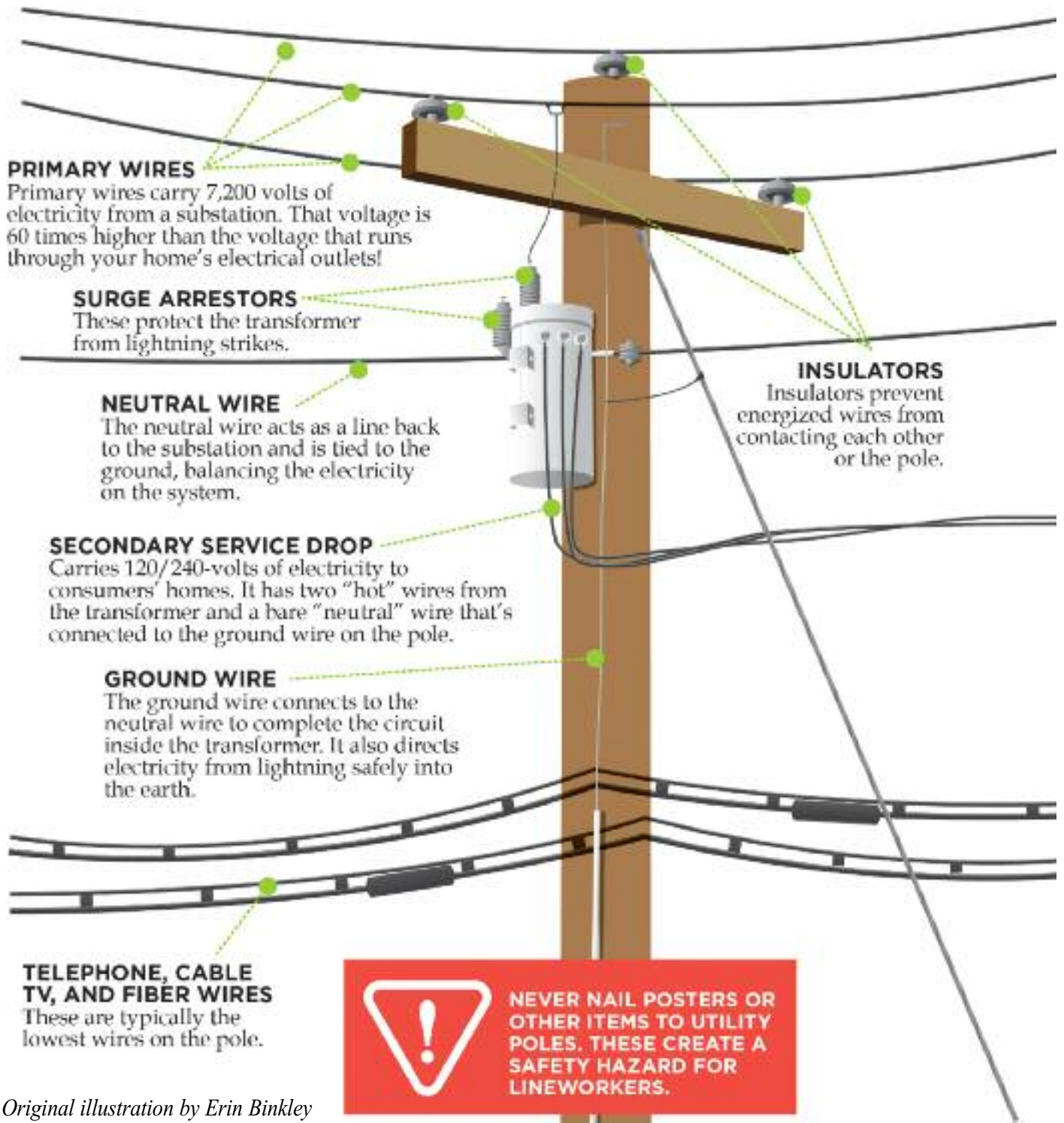
LARGE TREES	MEDIUM TREES	SMALL TREES
<p>Height/spread of more than 40 feet, such as:</p> <ul style="list-style-type: none"> • Maple • Oak • Spruce • Pine • Birch • Sweetgum • Linden 	<p>Height/spread of 25 to 40 feet, such as:</p> <ul style="list-style-type: none"> • Washington hawthorn • Goldenraintree • Eastern redbud • American arborvitae • Dogwoods 	<p><i>Avoid planting within 20 feet of power lines. When planting within 20 feet is unavoidable, use only shrubs and small trees.</i></p> <p>Height/spread of no more than 25 feet such as:</p> <ul style="list-style-type: none"> • Star magnolia • Crabapple • Lilac

Be safe! Always call 811 before you dig to locate any buried utility lines.

Source: The Arbor Day Foundation and the National Rural Electric Cooperative Association

WHAT'S ON THAT POLE?

This illustration shows the basic equipment found on electric utility poles. The equipment varies according to the location and the service they provide.



Original illustration by Erin Binkley