



MAY 2024

# CO-OP NEWS

## GENERAL MANAGER'S REPORT

3978 US Hwy 26/85  
Torrington, WY 82240  
PO Box 359, Lingle, WY 82223

**How to reach us**  
877-WYRULEC

**E-mail:** [wyrulec@wyrulec.com](mailto:wyrulec@wyrulec.com)  
**Website:** [www.wyrulec.com](http://www.wyrulec.com)

**May through September**  
Office hrs: 6:30–5:00, Mon.-Fri.

**October through April**  
Office hrs: 7:30–4:00, Mon.-Fri.

### Board of Directors

Dewey Hageman  
*President*

Mark Knaub  
*Vice President*

Ben Scott  
*Secretary*

Kenda Knudsen  
*Treasurer*

Julie Kilty  
*Assistant Secretary*

**General Manager**  
Ryan Schilreff

**Senior Staff**  
Miles Duffy  
*Operations Manager*

Tiphonie Fuss  
*Office Manager*

Your cooperative is a proud member of these fine organizations



### Banner County Storm

I hope this article finds you well and off to a good start this spring! For our members in Nebraska and your Cooperative it has been a tough one. On Sunday April 7th, we experienced a severe wind and ice storm in our Banner County, Nebraska service territory. I would guess this is one of the worst storms, as far as damage is concerned, that Wyrulec has experienced. We lost over 140 poles and had residential services without power for approximately 3 days. It was a monumental task to restore power, and we had two contracted crews, as well as a mutual aid crew from Wheatland REA onsite the next day to help us set poles and restore power. Logistically, it was even more challenging. The service territory that was affected is approximately 70 miles (one way) from our headquarters. Fortunately, we were sitting on adequate inventory numbers that allowed us to start repairing the system right away. We were also able to engage our suppliers and get over 100 poles and associated material delivered over the next two days, which allowed us to make great progress.

I have been asked several times if the storm is covered by insurance. While most all of our plant is covered by our insurance provider, poles and wires are not insurable, given the risk. Since the cooperatives to the north and south of us got hit hard as well, we met the dollar amount threshold to engage FEMA to help recover some of our costs. Wyrulec's estimate alone is \$800,000.



**Ryan Schilreff**  
*General Manager*



*continued . . .*



## CONTINUED. . . GENERAL MANAGER'S REPORT

At the annual meeting I talked about how our greatest asset is our employees. There is no better demonstration of that than how the cooperative employees performed during this process. Our office staff tried to reach each member affected personally to let them know the situation we were in and the extended time they would be out of power. Our operations crews and contractors worked from 6 AM to 10 PM every day in terrible conditions. The wind really never let up those days, with gusts between 20 mph and 50 mph. The first night of the storm we had crews work completely through the night into the next day. As a company, we always want to restore power as quickly as possible. As a manager, I know we must do it safely, and at times we may have to pull the reins back and make sure our people are safe and can get some rest so we can continue to be productive.

I want to thank the members who were out of power for this extended period of time for being patient while we worked diligently on restoration.

### Vegetation Management

During the annual meeting, I spoke about the big impact of wildfires on electric utilities, and the liability associated with the fires. As we look at ways to implement wildfire mitigation, vegetation management is a starting point. The Wyrulec board just approved an updated policy for vegetation management and tree trimming. If you would like to review this policy, please go to our website at [wyrulec.com](http://wyrulec.com) and select Service Center – Rules, Regulations, and Rates – Tree Trimming.



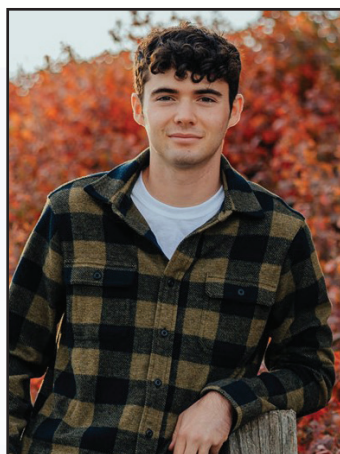


# WYRULEC SCHOLARSHIP PROGRAM

Ten local students were awarded scholarships at the 88th Annual Meeting on March 26th. Each year we award up to \$10,000 in scholarships to students who receive their electrical power from Wyrulec Company. The Scholastic and Trade scholarships (\$1,000 each) are made possible by funds from donated or unclaimed capital credits. Tri-State Generation & Transmission finances a \$1,000 scholarship, and Basin Electric Power Cooperative finances an additional \$1,000 scholarship for member students.

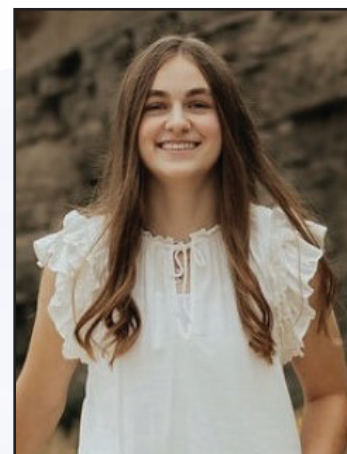
We firmly believe that investing in our youth is crucial for the future of our communities. By providing these scholarships, we encourage our students to pursue their educational goals, and we hope to empower them as they seek a bright future where they will continue to positively impact their communities.

We would like to congratulate the following outstanding students on earning a scholarship to assist with their pursuit of a higher education or trade skill. Recipients are chosen by a Scholarship Committee of one volunteer from each of the member districts.



© Samantha Wagner-Yung

**Jorey Asmus**  
(Torrington High School) -  
Wyrulec Scholastic Scholarship



© Samantha Wagner-Yung

**Sasha Haines**  
(Southeast High School) -  
Wyrulec Scholastic Scholarship



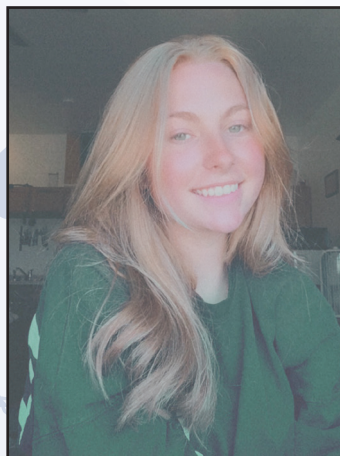
© Corie Leiseth Photography

**Holly Leiseth**  
(Lingle-Fort Laramie High School) - Wyrulec Scholastic Scholarship



© Kadra Marie Photography

**Kylee Llewellyn**  
(Southeast High School) -  
Wyrulec Scholastic Scholarship



© Emma Short

**Emma Short**  
(Eastern Wyoming College) -  
Wyrulec Scholastic Scholarship



© Samantha Wagner-Yung

**Baylie Booth**  
(Southeast High School) -  
Wyrulec Trade Scholarship



© Dirt Road Wife Photography

**Sidwell Petersen**  
(Wyoming Connections Academy) - Wyrulec Trade Scholarship



© Dirt Road Wife Photography

**Mason Sorensen**  
(Southeast High School) -  
Wyrulec Trade Scholarship



© Dirt Road Wife Photography

**Connor Booth**  
(Torrington High School) -  
Tri-State G&T Association Scholarship



© Back 40 Photography

**Delaney Childers**  
(Eastern Wyoming College) -  
Basin Electric Power Cooperative Scholarship





## DON'T PLUG THESE 15 THINGS INTO A POWER STRIP

It is fine to plug in some things into a power strip, such as computers, lamps, phones and other light-load electronics.

However, appliances that require a lot of power should not be plugged into a power strip. Do not use a power strip with the following appliances:

### IN THE KITCHEN

- × Refrigerators
- × Microwave ovens
- × Toasters
- × Coffee makers
- × Blenders
- × Slow cookers
- × Rice cookers

### IN THE BATHROOM

- × Hair dryers
- × Curling irons
- × Other hairstyling tools

### IN THE LAUNDRY ROOM

- × Washing machines
- × Dryers

### ANYWHERE

- × Sump pumps
- × Space heaters
- × Portable air conditioners



*Do not overload power strips by plugging in appliances that consume more watts than the cord can handle. This can cause the power strip to overheat or start a fire.*

Safe  
Electricity.org®

Learn more at:

The following names have been drawn for a **\$25** bill credit.

Contact Wyrulec Company at **877-WYRULEC** to claim your credit!

Lorna Pehl



Daniel Ellis



Michael & Joyce Evans



Bill Griffiths



Kathryn Mehling

