



MAY 2026



3978 US Hwy 26/85
Torrington, WY 82240
PO Box 359, Lingle, WY 82223

How to reach us
877-WYRULEC

E-mail: wyrulec@wyrulec.com
Website: www.wyrulec.com

May through September
Office hrs: 6:30–5:00, Mon.-Fri.

October through April
Office hrs: 7:30–4:00, Mon.-Fri.

Board of Directors

Mark Knaub
President

Ben Scott
Vice President

Kenda Knudsen
Secretary

Kyle Kilty
Treasurer

Dewey Hageman
Assistant Secretary

General Manager
Ryan Schilreff

Senior Staff
Miles Duffy
Operations Manager

Tiphonie Fuss
Office Manager

Your cooperative is a proud member of these
fine organizations



GENERAL MANAGER'S REPORT

I hope you all are having a great start to spring. I want to thank all those members who were able to attend the 90th annual meeting. It was good to visit with you, and I appreciate you taking the time out of your evening to be engaged with your electric cooperative. I hope you enjoyed the meal, gifts, and guest speaker. The article below will provide information on W.S. 34-1-159 and those lines that were constructed prior to 2006 that do not have an associated recorded easement.



Ryan Schilreff
General Manager

Wyrulec, like most electric cooperatives around the nation, has constructed miles of line throughout the years that never had a recorded easement. Most of these lines were built in the early days of initially providing electric service to our members, and those same lines have been maintained or replaced throughout the years for safety and reliability. Like other states around the nation, the utilities in the State of Wyoming thought it was time to get an established easement on those lines that we own, operate and maintain every day.

In the 2026 legislative session, W.S. 34-1-159 was established. This statute deals with prescriptive easements for electricity transmission and distribution systems. It grants a utility a nonexclusive statutory easement for those lines constructed prior to January 1, 2006, that do not have a written agreement or recorded easement. Included in this article are the notification requirements associated with the statute and a brief description of the statute. We also have a copy of this language and the full text of the statute on our website for review. This will not affect how Wyrulec continues to conduct business and should have little or no impact on our members. Today, we get easements on all our lines and have easement language in our Rules and Regulations filed at the Wyoming Public Service Commission, and in our contracts for electric service that each member signs. If you have questions or concerns, please feel free to give me a ring I would be happy to discuss this topic with you.

NOTICE:

TO ALL MEMBERS AND CUSTOMERS OF WYRULEC COMPANY HAVING A WYRULEC ELECTRICITY DISTRIBUTION OR TRANSMISSION DELIVERY SYSTEM, OR PORTION OF SYSTEM, VISIBLY ON THEIR PROPERTY, WHICH WAS INSTALLED ON OR BEFORE JANUARY 1, 2006, AND FOR WHICH THERE IS NO VALID EXISTING WRITTEN EASEMENT IN FAVOR OF WYRULEC COMPANY.

Pursuant to Wyoming Statute 34-1-159, effective July 1, 2026, Wyrulec Company will possess a statutorily established easement for its electricity distribution and transmission system that was installed on your property on or before January 1, 2006. This easement shall give Wyrulec Company the following rights:

- (1) The right to reconstruct, re-phase, maintain and repair the existing system and the right to trim and remove trees and other vegetation hazardous or reasonably likely to become hazardous to the delivery system.
- (2) Access to the easement and ingress and egress shall be limited to the extent necessary to permit the reasonable enjoyment of the rights and privileges granted by this statute unless access or ingress and egress to parts

of the easement would be hazardous to or materially encumbered for the electric utility, in which case the easement may include other reasonable access that minimizes impacts on the Landowner to the extent reasonably possible.

- (3) The width of an easement granted under this statute shall be consistent with the historical and traditional use by the electric utility of the delivery system but shall not exceed thirty (30) feet in any direction from the location of the existing line or other physical components of the system.
- (4) Wyrulec Company may not expand its use of the easement beyond adjustments consistent with historic uses in a way that would materially increase the burden on the landowner's property, except when needed to serve a reasonable expansion of use for neighboring or local land uses. Such exception shall not include industrial and manufacturing-related increases in wattage.

The full text of Wyoming Statute 34-1-159 is available at Wyrulec Company's website: <https://www.wyrulec.com/rules-regulations-and-rates>

ENERGY EFFICIENCY TIP OF THE MONTH

As we prepare for the seasonal shift, remember to set your ceiling fan rotation accordingly. In winter months (or whenever your home heating system is running), fan blades should rotate clockwise, which produces an updraft that pushes warm air down. In summer months (or whenever your home cooling system is running), blades should rotate counterclockwise, which produces a downdraft or windchill effect that makes you feel cooler. When used correctly, ceiling fans can boost comfort and allow you to adjust the thermostat a few degrees for energy savings.

Source: energy.gov

TIPS TO AVOID ENERGY SCAMS



Protect your accounts by enabling multi-factor authentication (MFA) wherever possible. MFA adds an extra layer of security by requiring a second step—like a code sent to your phone or an authentication app—beyond just your password. Even if a scammer steals your login information through phishing or data breaches, MFA can stop them from accessing your account. Choose app-based authentication over text messages when available, as it's more secure. Taking a few minutes to turn on MFA for email, banking and additional online accounts can significantly reduce your risk of identity theft and financial loss.

Source: staysafeonline.org



WYRULEC SCHOLARSHIP PROGRAM

Eleven local students were awarded scholarships at the 90th Annual Meeting on April 16th. Every year we award scholarships to students who receive their electrical power from Wyrulec Company. The Wyrulec scholarships are made possible by funds from donated or unclaimed capital credits. In addition to Wyrulec, Tri-State Generation & Transmission finances a \$1,000 scholarship, and Basin Electric Power Cooperative finances an additional \$1,000 scholarship, bringing the total to \$15,500 awarded to local students.

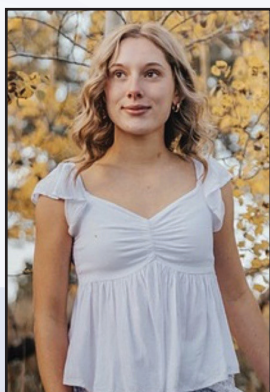
We firmly believe that investing in our youth is crucial for the future of our communities. By providing these scholarships, we encourage our students to pursue their educational goals, and we hope to empower them as they seek a bright future where they will continue to positively impact their communities.

We would like to extend a huge thank-you to all students who applied. We received applications from many talented students, and our Scholarship Committee (comprised of one volunteer from each member district) had the challenging task of choosing the recipients from a pool of exceptional applicants. We would like to congratulate the following outstanding students who were selected for scholarships to assist with their pursuit of a higher education or trade skill:



© Joelle B Photography

Liam Haas
(Wyoming Virtual Academy)
Wyrulec Scholastic Scholarship



© Michael Magill Photography

Natalie Hawes
(Torrington High School)
Wyrulec Scholastic Scholarship



© Dirt Road Wife Photography

Kaycee Kosmicki
(Southeast High School)
Wyrulec Scholastic Scholarship



© Keira Marie Photography

Keana Llewellyn
(Southeast High School)
Wyrulec Scholastic Scholarship



© Dirt Road Wife Photography

Natalie Long
(Torrington High School)
Wyrulec Scholastic Scholarship



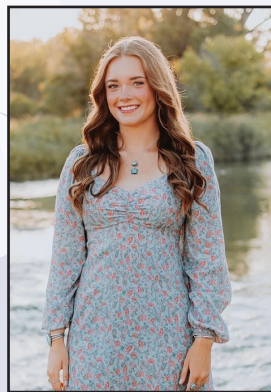
© Adam Franco Photography

Trishell Pontarolo
(Torrington High School)
Wyrulec Scholastic Scholarship



© Jordynn Speckner

Jordynn Speckner
(Lingle-Fort Laramie High School)
Wyrulec Scholastic Scholarship



© Toliano Studios

Taylor Tregemba
(Southeast High School)
Wyrulec Scholastic Scholarship



© Dirt Road Wife Photography

Wittni Bugher
(Laramie County Community College)
Julie Kilty Memorial Scholarship



© Abby Grace Photography

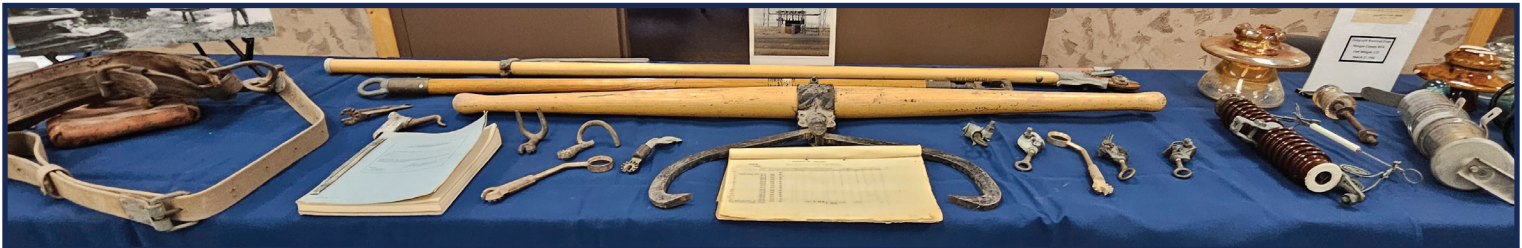
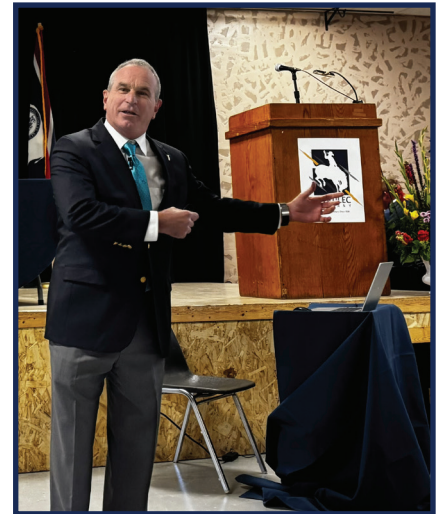
Anna Frederick
(Lingle-Fort Laramie High School)
Tri-State G&T Association Scholarship



© Refuse to Lose Photography

Klacie Groene
(University of Wyoming)
Basin Electric Power Cooperative Scholarship

90TH ANNUAL MEETING



**The following names have been drawn for a \$25 bill credit.
Contact Wyrulec Company at 877-WYRULEC to claim your credit!**

Larry Hartung
Todd Stevenson
Jay Volmer

Olsen Ranches
Nancey Marlatt

