



**Ryan Schilreff**  
General Manager



# CO-OP NEWS

JUNE 2021

\* William Rader Jr \*



GENERAL MANAGER'S REPORT

\* Lucas Moore \*

3978 US Hwy 26/85  
Torrington, Wyoming 82240

PO Box 359, Lingle, 82223

**How to reach us**

307-837-2225 • 800-628-5266  
Fax: 307-837-2115

E-mail: [wyrulec@wyrulec.com](mailto:wyrulec@wyrulec.com)  
Website: [www.wyrulec.com](http://www.wyrulec.com)

May through September  
Office hrs: 6:30–5:00, Mon.-Fri.



October through April  
Office hrs: 7:30–4:00, Mon.-Fri.

**Board of Directors**

Kenda Knudsen  
*President*

Julie Kilty  
*Vice President*

Mark Knaub  
*Treasurer*

Dewey Hageman  
*Secretary*

Clay Peterson  
*Assistant Secretary*

**General Manager**  
Ryan Schilreff

**Senior Staff**  
Miles Duffy  
*Operations Manager*

Tiphonie Fuss  
*Office Manager*

A Touchstone Energy Cooperative

Your cooperative is a proud member of these fine organizations



## Annual Meeting This Month

I want to encourage you to take the time to attend the cooperative's annual meeting on June 24th at the Rendezvous Center in Torrington.

I have asked Tri-State to come and speak at the meeting and educate us on how we can continue to maintain reliability and cost to our members as we make the transition to renewable energy. I have also asked them to talk about the rolling blackouts on the Eastern interconnect, and how we avoided that same situation on the Western interconnect.

In addition to approving the minutes and financial reports for the last two years, I will talk about the financial position of the cooperative, rates, reliability, and our employees.

I know June is a busy time of year for most of you, but we hope you can find the time to come join us and celebrate 85 years of service to our members.

If you have any questions about your cooperative, you can reach me via email at [rschilreff@wyrulec.com](mailto:rschilreff@wyrulec.com) or on my cell phone at 307-575-2435.

## Wyrulec Scholarship Program

This year we awarded \$9,000 in scholarships to students who receive their electrical power from Wyrulec. The Scholastic and Trade scholarships are made possible by funds from donated or unclaimed capital credits, and Tri-State Generation and Transmission also finances two \$500 scholarships for member students.

We would like to congratulate the following students, as they have been selected by our Scholarship Committee to receive scholarships for the school year 2021-2022:



©Dir Road Wife Photography

**Harrison Hall (Southeast High School) - \$500 Tri-State G&T Association Scholarship**

# Wyrulec Scholarship Program



©Sunshine Photography

**Rebeca Foos (Southeast High School) - \$500 Tri-State G&T Association Scholarship**



©Jamie Beightol

**Dharbey Beightol (Southeast High School) - \$1,000 Wyrulec Scholastic Scholarship**



©Dirt Road Wife Photography

**Danielle Clapper (Southeast High School) - \$1,000 Wyrulec Scholastic Scholarship**



©Sarah Ward

**Alexis Elmore (Guernsey-Sunrise High School) - \$1,000 Wyrulec Scholastic Scholarship**



©Dirt Road Wife Photography

**Jady Hall (Southeast High School) - \$1,000 Wyrulec Scholastic Scholarship**



©Jenny Keller

**Carly Keller (Southeast High School) - \$1,000 Wyrulec Scholastic Scholarship**



©Cade Lubow Photography

**Jaycee Myrtle (Torrington High School) - \$1,000 Wyrulec Scholastic Scholarship**



©Dirt Road Wife Photography

**Clara Petersen (Southeast High School) - \$1,000 Wyrulec Trade Scholarship**



©Shaylyn Gladson

**Dawson Reichert (Southeast High School) - \$1,000 Wyrulec Trade Scholarship**

# Tree Trimming Improves Service for All

One of the things we all love about our community is the natural beauty that surrounds us. We are fortunate to have many trees that offer beauty, shade, and a habitat for all sorts of birds and other wildlife. We know that you appreciate our community for many of the same reasons.

At Wyrulec Company, we strive to balance maintaining beautiful surroundings and ensuring a reliable power supply by keeping power lines clear in rights of way (ROW).

## Rights of Way

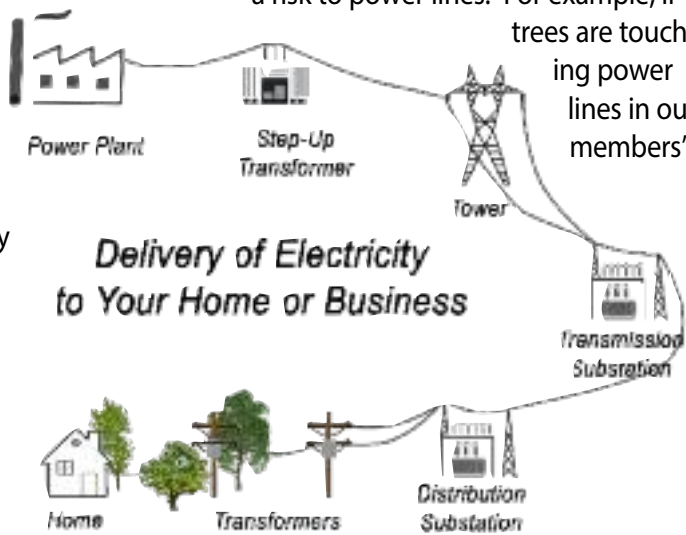
While we recognize and appreciate the beauty of trees, there are three main benefits to tree trimming in ROW areas. However, before touching on the main reasons, here's an explanation about what a "right of way" is and how it may impact you. A right of way is the land we use to construct, maintain, replace, or repair underground and overhead power lines. Rights of way enable the co-op to provide clearance from trees and other obstructions that could hinder the power line installation, maintenance, or operation. Wyrulec must be able to maintain the power lines above and below the ROW. The overall goal of our vegetation management program is to provide reliable power to our members while maintaining the beauty of our community.

Proactive vegetation management benefits co-op members in three tangible ways. \* Stanley Ackerson \*

## Safety

First and foremost, we care about our members and put their safety and that of our lineworkers above all else. Overgrown vegetation and trees pose a risk to power lines. For example, if

trees are touching power lines in our members'



yards, they can pose grave danger to families. If children can access those trees, they can potentially climb into a danger zone. Electricity can arc, or jump, from a power line to a nearby conductor like a tree. A proactive approach also diminishes the chances of fallen branches or trees during severe weather events that make it more complicated and dangerous for lineworkers to restore power.

## Reliability

Of course, one of the biggest benefits of a smart vegetation management program is reliability.

ty. Strategic tree trimming reduces the frequency of downed lines causing power outages. Generally speaking, healthy trees don't fall on power lines, and clear lines don't cause problems. Proactive trimming and pruning keep the lines clear to promote reliability.

## Affordability

As you know, Wyrulec is a not-for-profit cooperative, and that means we strive to keep our costs in check to keep our rates affordable. This extends to our approach to vegetation management. If trees grow too close to power lines, the potential for expensive repairs also increases. Effective tree trimming and other vegetation management efforts keep costs down for everyone.

Our community is a wonderful place. We appreciate the beauty trees afford, but we also know our community depends on us to provide reliable energy. Through vegetation management, we are better able to keep the power lines clear, prepare for future weather events and secure the reliability of the grid.



### HAPPY FOURTH OF JULY!

THE WYRULEC OFFICE WILL BE CLOSED ON MONDAY, JULY 5TH IN OBSERVANCE

Please call (307) 837-2225 to report an outage.



# FREE AND EASY WAYS TO SAVE ENERGY

Here are 10 easy, no-cost ways to save energy this summer:



**1.** Close or lower window coverings during the heat of the day



**2.** Set your thermostat a few degrees higher



**3.** Take cooler showers (this feels better in the summer, anyway)



**4.** Use countertop appliances or a microwave instead of your oven



**5.** Better yet, grill or smoke food outdoors



**6.** Unplug that extra fridge, especially older, inefficient models (they have to work even harder in a hot garage)



**7.** Optimize your programmable thermostat's features (around 40% of homeowners never program them)



**8.** Check the airflow around windows and doors (add weather stripping if needed)



**9.** Unplug all chargers and electronics before leaving the house



**10.** SHUT THE FRONT DOOR (don't air condition the outdoors)

Safe  Learn more at:  
**Electricity.org**<sup>®</sup>

\* Eugene Bartel \*